



Press release

## Uniview at California Academy of Sciences

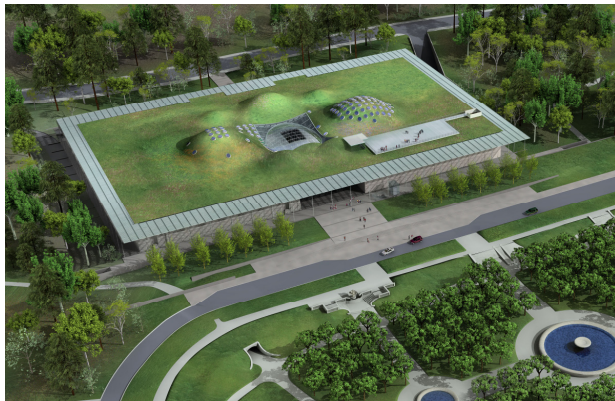
[www.scalingtheuniverse.com](http://www.scalingtheuniverse.com)

**STOCKHOLM, Sweden – January 25, 2008**

We are proud to announce that the California Academy of Sciences in San Francisco has chosen Uniview™ as their institution-wide visualization platform for Astronomy and Earth Sciences. In addition to its astronomical visualization capabilities, Uniview™ brings geobrowsing and environmental visualization into the hands of the Academy.

Working closely with the Academy's technology and planetarium consultant's Visual Acuity, Brighton, England we were able to develop a site-wide package that met the needs of both research and public programs. Uniview™ will be used both in the Morrison Planetarium and by travelling researchers and outreach programs, leveraging also the capability to network Uniview™ sessions across different locations on our planet.

Uniview™ will be installed alongside the fully digital Global Immersion Fidelity Bright fulldome solution, built around six high performance projectiondesign™ DLP™ projectors with a Media Director and Media Server high fidelity playback system.



California Academy of Sciences, Golden Gate Park, San Francisco

### About the Morrison Planetarium

Scheduled to reopen in fall 2008, the new all-digital planetarium is situated in a new building created by world famous architect Renzo Piano in collaboration with Stantec Architecture.

The building, located in the Golden Gate Park, has a strong environmental focus, with features such as a living roof, solar panels, water reclamation, reduced carbon footprint and a general focus on sustainability. Except for the planetarium, the Academy will also host an aquarium and a natural history museum.

### About Uniview

Uniview is a visualization and simulation software application aimed at presenting and teaching astronomy, astrophysics and Earthbased sciences such as geography, geology, biodiversity and climatology.

Through the unique Uniview ScaleGraph™ technology Uniview provides a seamless visualization of the entire known universe, from human scales all the way to the cosmic horizon. While being completely interactive, Uniview is powered by the Uniview Flight Assist™ algorithms to make sure motion is always smooth and intuitive.

### About SCISS AB

SCISS AB is a software development company founded in 2004 with its headquarters in Norrköping, Sweden. SCISS AB's mission is to deliver high quality visualization software designed for flexibility and ease of use to planetariums, science centers and other large-scale visualization facilities globally.

Please visit the official Uniview website at [www.scalingtheuniverse.com](http://www.scalingtheuniverse.com) or contact SCISS AB at [info@sciss.se](mailto:info@sciss.se).